


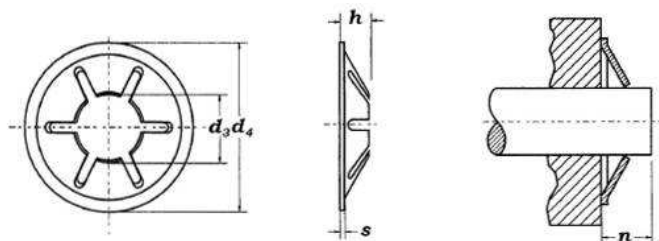


pierścienie KS

d ₁	Δ								D A N E	
		d ₃	d ₄	s		n min.	h	 (kg/1000)	H (N)	
1.5	+0.000 -0.025	1.30	6.00	0.25	3	2.5	1.2	0.10	200	
2.0		1.80	7.00	0.30	3	2.5	1.3	0.13	400	
2.5		2.30	8.25	0.30	3	2.5	1.5	0.15	700	
3.0		2.80	10.00	0.40	3	3.0	2.0	0.20	1200	
3.5	+0.000 -0.030	3.25	11.50	0.40	3	3.0	2.0	0.25	1200	
4.0		3.75	13.00	0.50	4	3.5	2.4	0.50	1300	
5.0		4.75	15.00	0.50	4	3.5	2.7	0.75	1500	
6.0		5.75	16.50	0.60	6	4.0	2.6	1.15	1800	
7.0	+0.000 -0.036	6.75	18.00	0.60	6	4.0	2.9	1.25	2000	
8.0		7.75	19.50	0.70	6	4.0	2.8	1.40	3000	
9.0		8.75	21.00	0.70	6	4.0	3.0	1.50	3500	
10.0		9.75	22.00	0.80	6	4.0	3.0	1.65	4000	



KS



INDUSTRIAL - INOX sp.j.